

# Fugue en Ut Majeur

G.F. Haendel

$\text{♩} = 100$

Euphonium 1  
*mf*

Euphonium 2  
*mf*

Tuba 1  
*mf*

Tuba 2

9

17

26



Musical score system 1, measures 26-33. It consists of four staves. The top staff has a treble clef and contains a melodic line with eighth and sixteenth notes, some beamed together. The second staff has a bass clef and contains a similar melodic line. The third staff has a bass clef and contains a bass line with eighth notes and some rests. The fourth staff has a bass clef and contains a bass line with quarter and eighth notes. The system ends with a double bar line.

34



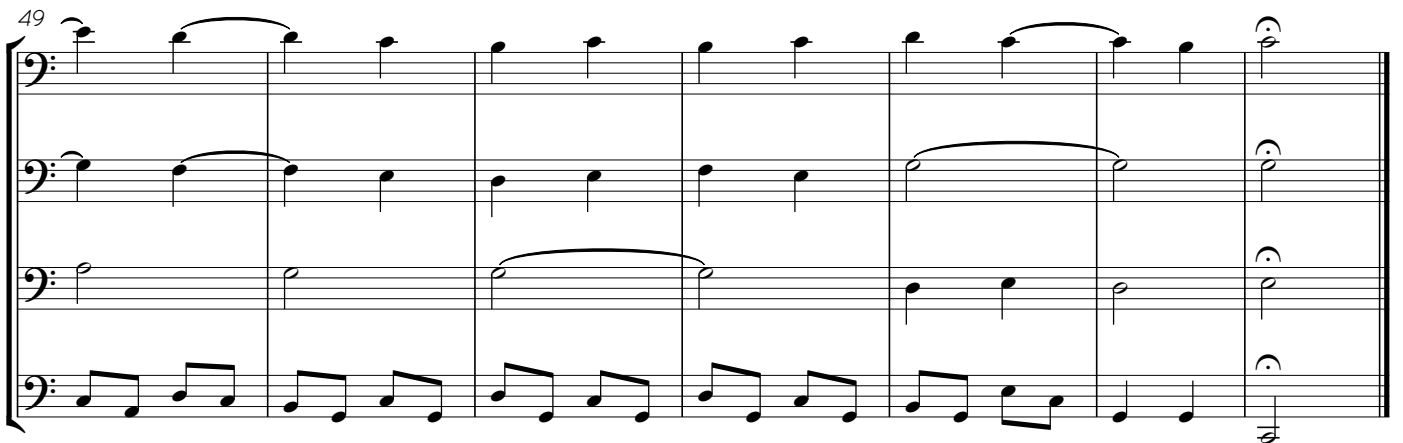
Musical score system 2, measures 34-41. It consists of four staves. The top staff has a treble clef and contains a melodic line with eighth notes and some beaming. The second staff has a bass clef and contains a melodic line with eighth notes and some beaming. The third staff has a bass clef and contains a bass line with quarter notes and some rests. The fourth staff has a bass clef and contains a bass line with quarter and eighth notes. The system ends with a double bar line.

42



Musical score system 3, measures 42-48. It consists of four staves. The top staff has a treble clef and contains a melodic line with eighth notes and some beaming. The second staff has a bass clef and contains a melodic line with eighth notes and some beaming. The third staff has a bass clef and contains a bass line with quarter notes and some rests. The fourth staff has a bass clef and contains a bass line with quarter and eighth notes. The system ends with a double bar line.

49



Musical score system 4, measures 49-55. It consists of four staves. The top staff has a treble clef and contains a melodic line with eighth notes and some beaming. The second staff has a bass clef and contains a melodic line with eighth notes and some beaming. The third staff has a bass clef and contains a bass line with quarter notes and some rests. The fourth staff has a bass clef and contains a bass line with quarter and eighth notes. The system ends with a double bar line.

# Fugue en Ut Majeur

G.F. Haendel

♩ = 100

*mf*

9

20

30

37

46

# Fugue en Ut Majeur

G.F. Haendel

$\text{♩} = 100$

*mf*

9

20

30

37

46

# Fugue en Ut Majeur

G.F. Haendel

$\text{♩} = 100$

**3**

*mf*

11

20

**8**

35

43

49

# Fugue en Ut Majeur

G.F. Haendel

♩ = 100

**3**

*mf*

11

**8**

20

35

43

49

# Fugue en Ut Majeur

Tuba 1

G.F. Haendel

♩ = 100

6

*mf*

13

4

24

32

5

44

# Fugue en Ut Majeur

Tuba 1c.

G.F. Haendel

♩ = 100

**6**

*mf*

13

**4**

24

32

**5**

44



# Fugue en Ut Majeur

Tuba 2

G.F. Haendel

♩ = 100

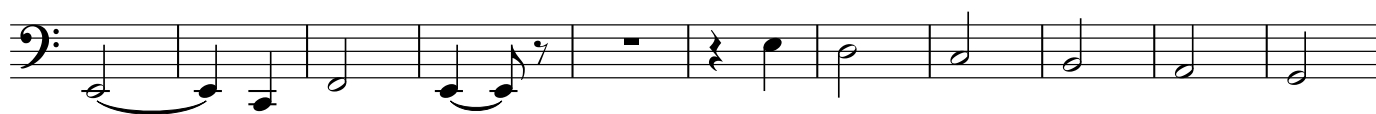
9



15

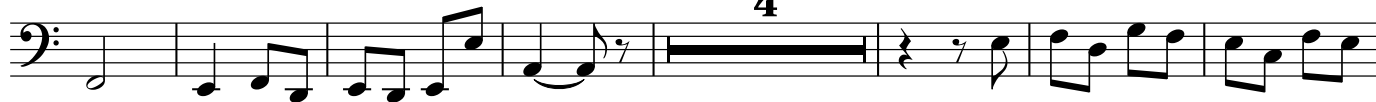


26



37

4



48



# Fugue en Ut Majeur

Tuba 2c.

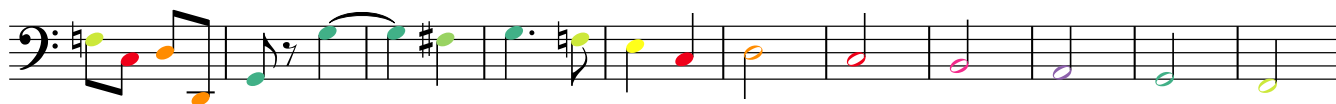
G.F. Haendel

♩ = 100

9



15

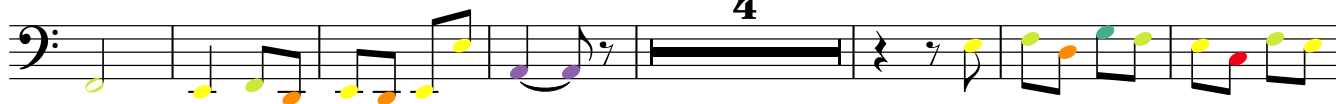


26



37

4



48

