

Fantasie N° 5

transposée en mi♭ majeur

George Philipp Telemann

Presto

Musical notation for the first system, marked **Presto** and *f*. The piece is in bass clef, 2/4 time, and the key signature has two flats (B♭ and E♭). The notation consists of a series of eighth-note patterns.

5

Largo

Musical notation for the second system, marked **Largo** and *mf*. The time signature changes to 3/2. The notation features wide intervals and a slower tempo.

9

Presto

Musical notation for the third system, marked **Presto** and *f*. The time signature returns to 2/4. The notation is more rhythmic and active.

14

Largo

Musical notation for the fourth system, marked **Largo** and *mf*. The time signature is 3/2. The notation includes a dynamic change to *mp* towards the end of the system.

19

Musical notation for the fifth system, continuing the **Largo** section. The notation features wide intervals and a slower tempo.

22

Musical notation for the sixth system, continuing the **Largo** section. The notation features wide intervals and a slower tempo, ending with a *mf* dynamic.

Allegro

Musical notation for the seventh system, marked **Allegro** and *mf*. The time signature changes to 9/8. The notation is more rhythmic and active.

6

Musical notation for the eighth system, continuing the **Allegro** section. The notation features eighth-note patterns.

10

Musical notation for the ninth system, continuing the **Allegro** section. The notation includes dynamic changes to *mp* and *mf*.

15

Musical notation for the tenth system, continuing the **Allegro** section. The notation features eighth-note patterns.

19

Musical notation for the eleventh system, continuing the **Allegro** section. The notation features eighth-note patterns.

Euphonium Ut

23

28

32

36

40

45

49

52

Allegro

mp

7

mf mp

14

21

28

33

f mf

Fantasie N° 5

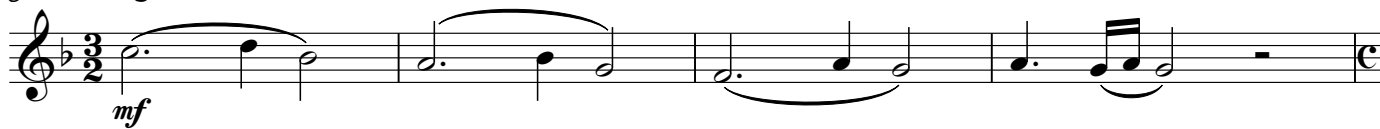
transposée en mi♭ majeur

George Philipp Telemann

Presto



5 **Largo**



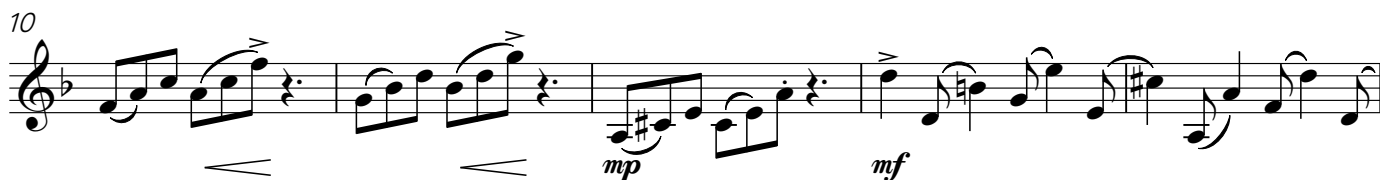
9 **Presto**

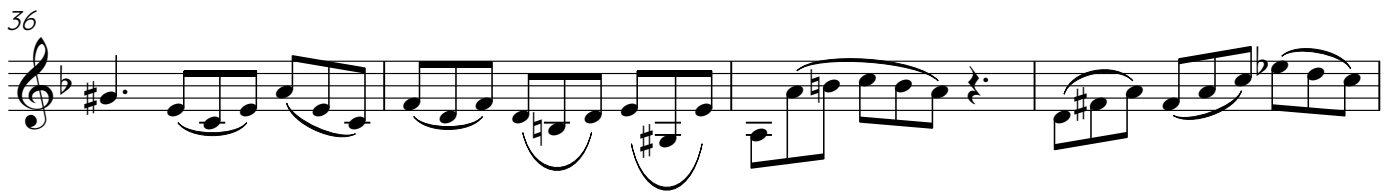


14 **Largo**



Allegro





Allegro

mp

7

mf mp

14

21

28

33

f mf